

Grave Concerns

The Newsletter of
The Friends of Linwood Cemetery
Bringing Linwood Cemetery Alive!

Issue 13, February 2017



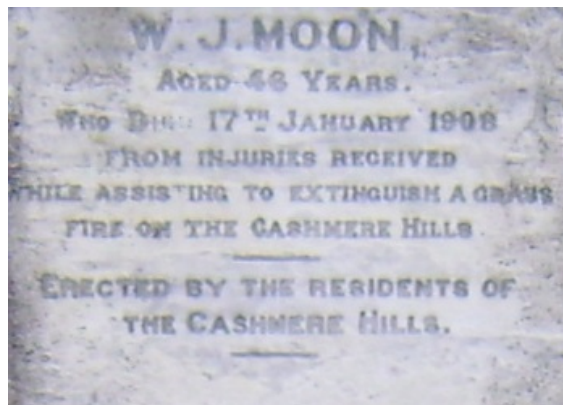
Read All About It!

As I write this, Christchurch's Port Hills are ablaze and the community is being asked to dig deep into its dwindled reserves of resilience, once again. I am a long way away, but able to get video news that is minutes old.

It was not that far back in time that families had to wait weeks for a letter for news from, or to, their "mother country" and a phone call had to be booked in advance. There was the Pacific telegraph line, and before that, you had to send a letter on a three month boat trip. News of the death or birth of a family member, economic hardship or success was 'old news' when it arrived. Responses to family requests for help could arrive six months after the crisis.

Behind everyone buried in Linwood Cemetery, are the histories of those who contributed to New Zealand's development and progress. There are stories of fires, heroism, chronic disease, innovation, ship wrecks, big business, pioneers and the milestone events of everyday folk - the news headlines of yesterday.

From The Editor



"From injuries received while assisting to extinguish a grass fire on the Cashmere Hills" (1908) Block 25 Plot 137

Contents

The Cemetery

Database Search Tips

Update- Kerrs Angel

Update – Heritage Week 2016

Lest We Forget

Did You Know?

Stillborn Area (Block 38)

130 years ago

Richard Reflects

Date of Next Meeting

New Research Project

Black Sheep Unmasked

ANZACs Remembered

Our Next Issue

The Cemetery

We are taking a low profile in the cemetery at the moment as a response to the shrinking amount of volunteer hours available to the Trustees.

We are still helping people find their ancestors. Email only to info@linwoodcemetery.org.nz.

Please help the cemetery by;
reporting any vandalism, compliments or concerns about ground maintenance, or health and safety issues found when in Linwood Cemetery, to CCC Customer Services. 03 941 8999, using the *Snap Send Solve* app or email to CustomerServices@ccc.govt.nz

reducing the need for chemical sprays by weeding your ancestors plot.

helping yourself to pine needles to mulch around your garden plants that like acidic soil.

contacting a CCC approved Monumental Mason to discuss restoration and repair options and costs; Fraser Lawrence, Decra Art and Robertson's.

reading the Best Practice Guide on www.cemeteries.org.nz before planning work on a grave plot.

joining us as a Friend to show your support for the Trust for \$5 per year. We are a Charitable Trust so, the amount you give is tax deductible for NZ tax payers if you request a receipt.

joining us as a Trustee. Our next meeting to discuss operational issues will be on **Wednesday 12th April 2017 at 5.15pm.**

Contact info@linwoodcemetery.org.nz for further details.

Database Search Tips

All those buried in Linwood Cemetery are listed on the CCC Cemetery Database.

<http://heritage.christchurchcitylibraries.com/Cemeteries/>

If a record is not coming up when you search -

- Know the cemetery? Filter the search to select the cemetery by clicking on **Advanced Search.**

- Try different ways to spell the names.
- Leave out the Forename(s). Your ancestor may have been known by a different name from their officially registered name.
- Put in fewer letters to get a wider search – you don't need to put the full Surname in.
- Use the date filter if you are getting too many results - the exact date if you know it, or guesstimate a date range.
- Don't give up!

Still can't find your Christchurch ancestor and they died 1936 or later? They may have been cremated. Contact Woodlawn Memorial Gardens, 455 Linwood Avenue, Christchurch www.cremsoc.nz. As a private concern, their records are not on the internet.

*I am humbly blown away by your prompt response and the details therein.
Thank you so much!!!! I thought I'd tried every spelling combination but obviously not the right one. I am very grateful to finally know where this humble Lady lies and it adds another piece to the puzzle.
Yvonne, NZ*

Update - KERR's Angel

We have agreed to use our remaining funds to raise the angel back onto the plinth.

Update - Heritage Week 2016

Another successful Heritage Week last October/ November. Richard Greenaway's Tours of the local cemeteries were well attended. About 20 people joined him at his Linwood Cemetery tour where Jen did a great job promoting the Trust's achievements.

Lest We Forget



The third of our booklets showing the WW1 memorials in Linwood Cemetery will be released at our ANZAC Commemoration in April. It focuses on the **1917 Ypres / Paashendaele** Campaign. Copies will be available from the Trust as an e-mailed pdf document. Contact info@linwoodcemetery.org.nz.

Did you know?

There's fish among the chips in Linwood Cemetery

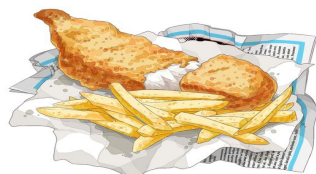
5 x WHALEs

11 x COCKLES

2 x HERRINGS

2 x WHITINGS

3 x CODLINGS



and it needs your help, not salt or vinegar, to preserve it.

Stillborn Area (Block 38)

We sometimes find information on other people's websites that needs correcting. Last year, Richard found a photo, with notes attached, of Block 38 Plots 1-6 (Catholic area) on www.teara.govt.nz.

Many years ago, a note on the Sexton's map "Area for suicides and still-borns" was assumed, without checking, to be used for just that. The mis-information was put in the *CCC Conservation Plan for Linwood Cemetery*. Despite the Trust's best attempts to have the Conservation Plan updated, this inaccuracy remains and, due to the internet, is being re-quoted as fact. We asked Te Ara to remove the information. They verified it and have now taken off the photo and its comment.

You can find out more about Linwood Cemetery Suicides on www.linwoodcemetery.org.nz.

130 years ago.....

By 22 April 1887,

- the cemetery had been open 3 years,
- the tram line had been operating 1 year,
- 163 people had been buried in the cemetery, many infants,
- Only Blocks 1 (Anglican), 2 (Anglican), 8 (Anglican), 23A (Anglican - poor persons), 32 (Wesleyan), 37 (Catholic), 39 (Catholic) were being used. The rest of the cemetery was grass.

Next Meeting of the Trustees

Wednesday 12th April 2017 at 5.15pm

Contact info@linwoodcemetery.org.nz for venue details.

Richard Reflects

A series of snippets about an interesting Cantabrian buried in Linwood Cemetery, from Local Historian and Trustee, Richard Greenaway.

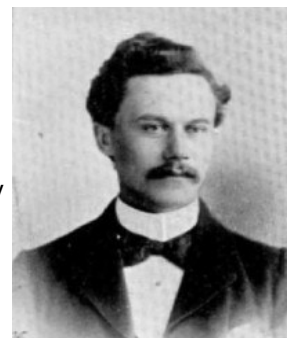
Sir James Hight (1870-1958)

Block 43 Plot 146

Born at Halswell on 3 November 1870, James Hight was the eldest of 8 children. His father Samuel Hight was Protestant, his mother Mary Ryan Irish Catholic. An unobtrusive Catholic himself, James became a leading academic in Christchurch, a city more closely associated with the Anglican Church.

Educated at the Malvern Primary School [NZ], in 1887, James became a pupil-teacher being instructed by his headmaster before and after classes. This coal-face experience would enable him to become an excellent academic teacher. He worked also as an orchestral violinist and would later support amateur musical societies and collect violins.

From 1891-92 James attended Christchurch teacher training college. A scholarship enabled him to attend Canterbury University College from 1891-94 gaining an M.A. with first class honours in language and literature (English and French).



Mr. J. Hight.

James taught English, modern languages and commercial studies at the Auckland University College and Grammar School. On 9 January 1897, at Christchurch, he married Margaret Green. Sadly their first two children died. Their third, a daughter, Doreen, survived and remained unmarried.

In 1901, Hight returned to Canterbury College and lectured in a variety of subjects. In 1906, the University of New Zealand awarded him its first Doctorate in Literature. From 1919-48 'Doc' Hight was Professor of History and Political Science. Very popular, he was also appointed University Rector. A year prior to his retirement, he was knighted.

Endowed with 'a prodigious memory, quick intelligence and sober judgment', James was strongly-built, dignified, of middle height, pale complexion and dark frizzy hair. His lectures were delivered in a low, even

voice and, occasionally, he would look over his glasses to single out a vital point. Except when attending meetings of the University of New Zealand senate, his only absence from Christchurch was in 1927 when he was an exchange professor at Leeds University, England.

N. C. Phillips wrote of Hight:

"Not only did he do much to establish the prestige of history as an academic discipline ... but, with a forward-looking mind, he fostered allied subjects ... economics, political science, sociology and geography Grown to manhood in the late Victorian era ... [he] was a true Victorian in his capacity for hard work ... zeal for improvement, and ... liberal but firm ideals of conduct, which he displayed by conduct rather than precept."

Hight wrote educational books for children. His academic works concerned the British Empire and New Zealand history and economics. He was one of a small group who advised G. R. Macdonald when he was compiling his famed Canterbury biographical dictionary.

Margaret Hight, James' wife, died on 30 August 1945 aged 73 and is buried beside him as she was during their married life. Associated with the Health Camp movement, her obituary stated, 'it will be for her kindness to the poor, her practical sympathy with the sick, her concern for the lonely and underprivileged that she will long be gratefully remembered'.

James, 87, died on 17 May 1958 and his name is recalled in the James Hight Library at the University of Canterbury, Ilam, which was opened in 1974.

Sources – see **Newsletters** on our website.

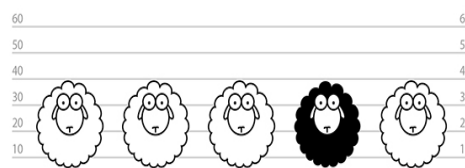
Richard Greenaway can be contacted at richatdlngreenaway@gmail.com

New Project – 1918 Flu Epidemic

The November 1918 [Influenza epidemic](#) caused a huge spike in burials in Linwood Cemetery, creating the need to start interments in [Bromley Cemetery](#).

Following the success of our ANZAC project, we are starting a project to identify those buried in Linwood Cemetery who died of influenza in 1918. The Friends

of the Christchurch Hospital Memorial Chapel (<http://cnmc.org.nz/>) are also carrying out research on this tragic event.



Black Sheep Unmasked

Archives New Zealand has announced that it has digitised NZ Police Gazettes from 1878 to 1945.

New Zealand police stations received copies of the Police Gazette, which were printed weekly and subsequently published in yearly volumes. This was the way police could keep in touch with one another and co-ordinate enquiries. The Gazettes were a work tool and many are worn and heavily annotated. They contain a wide variety of information such as notices on missing and wanted persons, stolen and recovered property, returns of persons convicted and prisoners discharged from prison, photographs of prisoners and appointments and resignations of police personnel

You can download a PDF file of a whole volume from the site. Click on the bottom 'Derivative Copy' on the left-hand menu, then follow the links to the PDF file

<https://www.archway.archives.govt.nz/ViewEntity.do?code=5803>

Sources: CCC Libraries, New Zealand Archives

ANZAC Commemoration Event

Sunday 23rd April 2017, 11am

Commemoration of those who gave their life or youth to military service and are memorialised in Linwood Cemetery with a focus on the **1917 Ypres / Paaschendaele** campaign. "Lest We Forget".

Our next issue

Issue 14 of *Grave Concerns* is scheduled for September 2017. If you have any questions, would like to contribute suggestions or content to our newsletter, please contact us by **9th August 2017**.