

GRAVE CONCERNS

The Newsletter of
The Friends of Linwood Cemetery
Bringing Linwood Cemetery Alive!

Issue 9, February 2015



Welcome to our 'Bumper Summer Issue'!

The Treaty of Waitangi was signed between Maori and Pakeha 175 years ago, changing the settlement of Aotearoa New Zealand for ever.

2015 is a time for other significant anniversaries in the history of NZ, many of which are reflected in those buried in Linwood Cemetery; many of our young people sailed for three months across the world to fight in World War 1 (1914-1918) never to return; NZ Freemasons have been in existence for 125 years, and the Workers Education Association in Canterbury (CWEA) is 100.

All of these people gave altruistically to the community.

As we look to the past, the existence of Linwood Cemetery - an undoubtedly valuable heritage site not just for Christchurch but the whole of NZ - needs to be future-proofed from deterioration which we now know will not come from the Government (Local or National) purse.

Craig Cormack, Chair FoLCCT

Contents

From the Chair
From the Secretary
The Cemetery
Just when...
A well deserved medal
Sir Arthur Dobson
Puzzle solving
130 years old -again!
Safety Shirts
Richard Reflects
Register of Friends
Far and Wide
Did You Know?
New Smart app.
WW1
WW2
A Grave Subject
Pretzel? Knot!
A true story
Benched!
Early Settlers
What's That Plant?
NZSG Library moves
Student internship
Project Update
2015 and beyond
Whats On?
Our Next Issue

From The Secretary

After many years of enforced "stops and starts", 2014 will be memorable for some significant progress in our work and, due to support for the media, an increase in public awareness concerning the preservation of Christchurch heritage.

For me, the most uplifting event was being invited to meet Victoria Wallace, the recently appointed Director General of the Commonwealth War Graves Commission (CWGC) on her very busy world tour visiting all the True War Graves and of which 4 days were spent in NZ.

We have always felt validated by the CWGC representatives in NZ. They invite us to join them in Linwood Cemetery during their two-yearly inspection of all the War Graves that are under their care in Christchurch. This special invitation to meet the new Director General on her visit to the CWGC funded repairs to earthquake damaged True War Graves was a joy and a real privilege.



Victoria Wallace, Director General of Commonwealth War Grave Commission being interviewed by TV One reporter in Linwood Cemetery on 29th November 2014. Although TV1 News filmed the visit, it hasn't made it to air so far.

The Cemetery

There's no getting away from it, responsibility for the preservation and upkeep of a family grave is the responsibility of it's descendants. We have spent many years looking into a variety of ways to help people with this often unwanted or financially burdensome task. Frustratingly we have found ourselves "treading water" for many years due to

- the legal issues of grave furniture being owned by the descendants of the person(s) buried in a plot,
- cemetery land not being insured or covered by the EQC,
- CCC staff changes and absences,
- waiting for completion of the CCC *Make Safe* programme,
- waiting to hear if there would be money from earthquake repair funds to restore the significant damage of 22 Feb 2011,
- the City Council overspend significantly reducing Community funding.

At least we now know the cemetery is safer for the public and the fallen headstones can be read, even if it's current state will remain "as is", and will no doubt slowly decline over time.

We are now able to spend funds gathered well before the earthquakes to preserve a couple of items specifically funded for at that time and will continue to look for sources of funding to complete our aims. **Thank you** to all our supporters who have given us donations to our Project Fund. Our aims on page 11 outline what it is earmarked for. Anyone can donate to our Project Fund. As a legally defined Charitable Trust, amounts donated to us over \$5 are tax deductible for NZ tax payers.

Just when it was looking so nice

Since the City Council replaced EQ damaged headstones on their correct plots face up so they can be read, Linwood Cemetery is looking the best it has done for some time. You can imagine our horror to hear the ideas that have been mooted to reduce the costs of upkeep of CCC parks and cemeteries. These include volunteer groups taking over the mowing of the grass and rubbish bins being replaced with skips that are emptied monthly.

The Trust is strongly opposed to these suggestions. As it is, the mowing by City Care has already been reduced from monthly to every 2 months.

Even if we wanted to, we do not have the physical resources or equipment to regularly mow 20 acres of landscaped grass. This proposal does not have any consideration for future proofing - what if the volunteer group isn't able to fulfil it's obligation?

We have enough dumping of refuse items in and around the cemetery now which need reporting to the CCC for removal. We can't see this being improved with a festering skip / mini refuse station / haven for the feral of any breed.

What do you think about these cost cutting ideas? Please let your Community Board and the City Council know so they can consider public opinion when re-shaping the City.

"Linwood looked beautiful and the repairs done to the earthquake damaged graves were excellent." [Victoria Wallace, CWGC, 2014]

A well deserved medal



One of the reasons Linwood Cemetery looks so tidy is that Judy continues to garden the 20-acres relentlessly and has done so for over 15 years now. We were delighted that she was granted a very well deserved 2015 Kiwi of the Year Award - Local Heroes Category at an official ceremony on 26th November 2014. Not just a medal, this award is a **thank you** to Judy from everyone connected to Linwood Cemetery for making it such a beautiful place to walk through and helping to ensure it's a well kept heritage site.

Sir Arthur no longer passed by

In 2009, we were awarded community funding towards work to preserve the grave plots identified as "notable and needing immediate attention" that are listed in the *Linwood Cemetery Conservation Plan* (2006). One of these is Sir Arthur Dudley DOBSON (Block 18 Plot 227). Now we are happy to be able to say that after 9 years this project is complete! Sir Arthur who discovered 'Arthur's Pass', was President of the Canterbury Mountaineering Club and they gave us a donation towards the costs in 2012. Following the carrying out of the work by Stonelay (who recently restored the Ballantyne Fire Memorial in nearby Ruru Lawn Cemetery), an article in the *Christchurch Mail* [11/12/2014] caught the eye of one of Sir Arthur's great-granddaughters and subsequently the family gave us a very generous donation to add to our Project fund.

Thank you!



Martin Geldhill, of the Canterbury Mountaineering Club, Alexandra and Jen of the Friends at the grave plot of Sir Arthur DOBSON before preservation work took place.



The crosses were too damaged with environmental acids to be re-erected but pieces have been professionally joined and the marble cleaned according to guidelines.

Volunteer solves puzzles

Visitors to Linwood Cemetery may have seen an area we call "The Jigsaw Puzzle Pieces" - a collection of broken masonry gathered some years ago from around the cemetery. Our volunteer Brian has been identifying the pieces and, when 100% sure of their location, is returning them to the correct plot. That's in-between photographing each of the 17,500 plots in the cemetery to give us an up-to-date

and complete record - a "little project" that has taken him a year so far! We hope this will also help us to identify the location of more jigsaw pieces so as many as possible will be returned to their correct plot.

Brian has also cleared the weeds from the large Community of the Sacred Name plot (Block 48 Plots 1a-8a) laid weed mat, planted it up with donated perennials, and mulched around the plants. We have had very positive feedback from the general public and the Community who are now based in Kaiapoi.

Thank you!

...As I have both my grandparents and one of my great grandparents buried in the cemetery, I appreciate the work of the Friends in maintaining & enhancing their place of burial."

J Haughey, Christchurch 20/10/2014

130 years old - again!

Linwood Cemetery has the best of birthdays, as the sequence of events brings an excuse to commemorate different anniversaries for 3 years!

The cemetery was first approved in November 1883, open for burials in April 1884, received its first interment in July 1884. It was Gazetted and the Cemetery By-Law (City By-Law N°9!) passed at the end of 1884. By the end of 1885 there had been 50 burials and the first rail of the tram line had been laid by Mayor Charles Partridge HULBERT (Block 3 Plot 1&2).

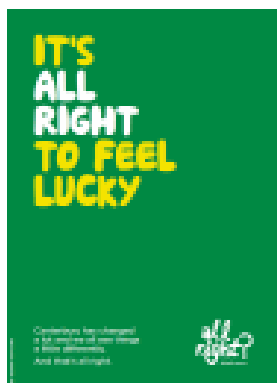
More details about these Key Events are on our website and you can keep up with them as they appear on our Facebook page.

The Friends of Linwood Cemetery Charitable Trust
*Working towards the enhancement and preservation of the
 historic Linwood Cemetery through active community involvement.*
 c/- 45 Rudds Road, Christchurch 8062, New Zealand ☎ +64 3 381 4171
www.linwoodcemetery.org.nz ✉ info@linwoodcemetery.org.nz

Facebook (thefriendsofLinwoodcemetery) (Linwood_Cem_Pal)

Safety shirts

Conditions in Christchurch mean that we are all more safety conscious. The Trust now has Hi-Viz safety shirts for wear in the cemetery kindly funded from the CCC Discretionary Fund 2013.

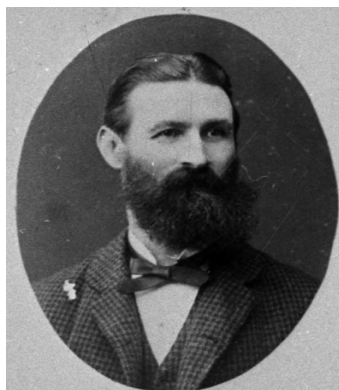


Thank you!

Richard Reflects

A series of snippets about an interesting Cantabrian buried in Linwood Cemetery, from Local Historian and Trustee, Richard Greenaway.

Born at Dunfriesshire, Scotland, in 1828, the son of a shipbuilder, Henry THOMSON emigrated to Australia where he became



Henry Thomson, 1882
(teara.govt.nz)

superintendent of the Sandridge wharf and railway station (now Port Melbourne). He first settled in NZ in 1856 in Wellington then moved to Nelson where, in 1859, he married Mary Ann COATES, daughter

of Giles COATES, proprietor of the watchmaking and jewellery company, G. COATES and Co. of Colombo Street, Christchurch. A partner in and, later, sole proprietor of the business, THOMSON was also a prominent, "zealous and devoted freemason" having been initiated in the NZ Pacific Lodge, Wellington on 22nd October 1857.

At a time when local bodies were elected annually, THOMSON was five times a city councillor - in 1867, 1868, 1875, 1878 and 1880. In November 1877, he narrowly defeated incumbent James GAPES for the position of Mayor of Christchurch. THOMSON commented wittily that, on this occasion, "the dark horse had proved the better Mayor" Subsequently, for one term, 1881-84, he represented the Christchurch North electorate in Parliament, supporting the conservative Atkinson Ministry. He was also a Justice of the Peace.

THOMSON became the first Grand Master of the now distinct New Zealand Freemasons in 1890 and remained in that position for 2 years.

He died on 13 September 1903 aged 76, and was buried at Linwood Cemetery in Block 14 Plot 4 where his 46 years as a freemason is celebrated. His gravestone, erected by the NZ Freemasons, is one of the most prominent.



Earthquake damage to Henry Thomson's grave. The globe has now been re-instated and the NZ Freemasons are having the monument fully restored to mark 125 years of NZ Freemasons with a re-dedication ceremony this coming June.

Register of Friends - update

As reported in our last newsletter, the Trust Board now has an annual renewal date and you will be contacted to see if you are willing to continue your valued support of The Friends in July/August. Any one can join the Friends at any time though! Just email us or use the form attached to this newsletter or the one on our website.

The Friends of Linwood Cemetery Charitable Trust
Working towards the enhancement and preservation of the historic Linwood Cemetery through active community involvement.
c/- 45 Rudds Road, Christchurch 8062, New Zealand ☎ +64 3 381 4171
www.linwoodcemetery.org.nz ✉ info@linwoodcemetery.org.nz
Facebook (thefriendsofLinwoodcemetery) (Linwood_Cem_Pal)

Your support of our work as "self-appointed guardians of Linwood Cemetery" is only \$5 and as we are a Charitable Trust, the amount you give is tax deductible. We need another 50 supporters to cover one year's operational costs and help provide evidence that we are "needed by the community" to retain our charitable status.

Thank you!

Far and Wide

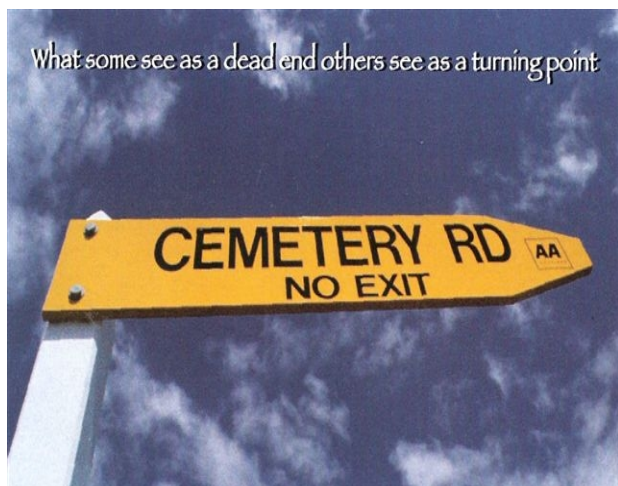
The Friends of Linwood Cemetery has contact with 190 descendants of people buried in Linwood Cemetery of which 10 are based in Australia and 5 in the UK.

If you have ancestors in Linwood Cemetery, we'd love to know!

Did you know?

Even those buried in Linwood Cemetery are never at rest:

- 1 is READING
- 1 is BOWLING
- 2 are PINCHING
- 5 are GOING
- 6 are FANNING
- and 72 are WALKERS



©Gerar Toye (www.globalgypsy.com)
With sincere thanks to Gerar for the permission to use this image.

Smart way to report tagging

There is a new local smart phone app for both iPhone and Android to report tagging instantly in Christchurch. It can be downloaded from <http://www.tagstoppers.co.nz>.

More information about stopping crime is also on the Neighbourhood Support Canterbury website <http://www.nscanterbury.org.nz>



LED BY IWM

Lest We Forget - WW1

Most of us are aware of the First World War Centenary commemorations especially as 2015 marks 100 years since the loss of so many NZ lives in the Gallipoli campaign. Linwood Cemetery has memorials to **38 service personnel who lost their lives** in Turkey, one of whom was a nurse.

We have registered Linwood Cemetery with as many First World War commemoration websites as we can to make the whole world aware of the sacrifice of Cantabrians during this war.

"From the cemeteries devastated by the Christchurch earthquakes to tiny country churchyards,... I have seen such a huge range of war commemorations across this beautiful country. It is a huge comfort to know the war dead are so well looked after... and valued so greatly by the communities".

[Victoria Wallace, CWGC, 2014]

The Friends of Linwood Cemetery Charitable Trust
Working towards the enhancement and preservation of the historic Linwood Cemetery through active community involvement.
c/- 45 Rudds Road, Christchurch 8062, New Zealand ☎ +64 3 381 4171
www.linwoodcemetery.org.nz ✉ info@linwoodcemetery.org.nz
Facebook (thefriendsofLinwoodcemetery) (Linwood_Cem_Pal)

At our 2015 ANZAC Commemoration on **Sunday 18th April**, we will focus on those who fought in the Gallipoli campaign. We hope you can join us from 11am to hear the names of those memorialised in Linwood Cemetery followed by a bag-piped lament and the Last Post.



Julia plays the Last Post at the end of our ANZAC Commemoration in Linwood Cemetery, April 2014.

WW1 genealogical research note

When researching 6/128 Private Francis Leonard RICHARDS (Block 17 Plot 39 - NZSG 5548) who died 09/05/1915 aged 20 at Gallipoli, Richard Greenaway found an interesting discrepancy between Private RICHARDS Cenotaph Record and the Index to Deaths.

The Index to Births gives his birth date as 1894, the Index to Deaths has him as dying in 1918 aged 20. But that's not correct. The Cenotaph record says he died at Gallipoli in 1915. It seems that no death certificate was issued until 1918, three years after his actual death. Also, his Archway entry gives his Will as 1915, not the year that the Will was made but the year of his death. It seems that usually death certificates are issued in the year of death, but not always during wars and so several sources need to be checked.

Lest We Forget - WW2



Michael BRENNAN had enlisted as pilot during the 2nd World War but died in a car crash before seeing active service. In this case, Michael

BRENNAN is still entitled to a True War Grave something only recently realised. Michael's new plaque was installed in October 2014 and can be found at Block 42 Plot 216. This brings the total of graves in Linwood Cemetery under the management 'in perpetuity' of the Commonwealth War Graves Commission to 56. There are a further 245 war memorials in the cemetery that are the responsibility of descendants many of which are in a very poor state of repair.

A Grave Subject

In 1999, the Linwood Heritage Group made a series of award winning local history films based on interviews with local residents. One, *A Grave Subject* was about Linwood Cemetery, and the Friends, concerned about it's survival on video tape, digitised it and, while they were at it, the Heritage Group's other three films. These films, a valuable record of the history of every day life in the area, have become even more important since the demolition of so many buildings following the earthquakes. Snippets of the films were aired during Heritage Week in October 2014 to an audience of over 30 people and subsequently the set of films have been copied on to two disks and are available for purchase from the Linwood Resource Centre [phone (03) 981 5594].

The quality of the films undeniably needs more specialist work and it is hoped that a professionally trained volunteer or funding can be found to do this at some time in the future. Copies are also intended for the Public Library and the National Film Archive and eventually *A Grave Subject* will be accessible from the Friends website.

Pretzel? Knot!

A series about interesting symbols on headstones in Linwood Cemetery.



We were sure Eugene George Henri MAINWARING (Block 20 Plot 134) must have been a Master Baker when we saw the pretzel symbol carved on his headstone, but research revealed he

was the ninth son of Rear Admiral MAINWARING of Whitmore Hall in the UK. As his mother was a countess from the Weimar district (today's Austria) and the pretzel is also a symbol of North European Catholic origin, this seemed a good fit. But, no, the Weimar district coat of arms does not depict a pretzel nor is he buried in the Catholic section of the cemetery, but the Anglican. A frustrating search of English peerage and heraldry also drew a blank and an e-mail to Whitmore Hall went unanswered.

Then Sandra, our researcher in Auckland, found information about the Staffordshire Knot at the same time that Craig was researching the owner of a Staffordshire Regiment cap badge also depicting the knot. And yes, Whitmore Hall is in Staffordshire!

Thank you!

Ask a silly question - a true story

The Christchurch Sexton was digging a hole ready for a burial.

"Who's that for?" asked the passer by.

"Someone who died in Auckland." the Sexton replied.

"Are they sending him down to be buried here?" queried the passer by.

"No", replied the Sexton, " they are sending up the hole."

Benched!

In 2008 the Friends raised money from the Eureka fund to provide a bench in the centre of this 20-acre cemetery. The only other bench is by the Quarter Plots near the car park. We were restricted by the City Council to a costly design empathetic to the age of the cemetery. Inconceivably, the bench has been repeatedly vandalised by carvings and graffiti. The wood is regularly oiled by Judy. On 31st October 2011 the back rest was smashed.



The City Council kindly had the bench repaired - each slat is a unique shape - and it returned to its place near the Peacock

Mausoleum in March 2014. It is unlikely that any further benches will be allowed in the cemetery without evidence that they are needed and will not be vandalised.

Easier Access to Early Settlers Records

The *G R Macdonald Dictionary of Canterbury Biographies* is finally on-line. This manuscript card compilation of about 22,000 entries on nineteenth century Cantabrians was completed in 1964 after 12 years of research by George Macdonald.

Each entry may contain from one to a dozen other family names, especially as women are generally not represented in their own right. Currently you can only get the first page on-line though more pages of a record will be added in future developmental phases. If the first card does not include the information required, then an enquiry will have to be made to Canterbury Museum in the usual way.

There is also a handy feature where you can make lists and email them to yourself.

<http://collection.canterburymuseum.com/search.do?highlight=17>

What's That Plant?

Red Hot Poker [*Kniphofia*, tritoma, torch lily, knofflers or poker plant] is named after Johann Hieronymus KNIPHOF, an 18th-century German physician and botanist.



First described as a genus in 1794 it is known colloquially as Red Hot Poker as, from a distance, it looks like firebrands.

The red, orange and yellow flowering stem can reach up to 150cm. The leaves are lily-like, hence its alternative common name of Torch Lily.

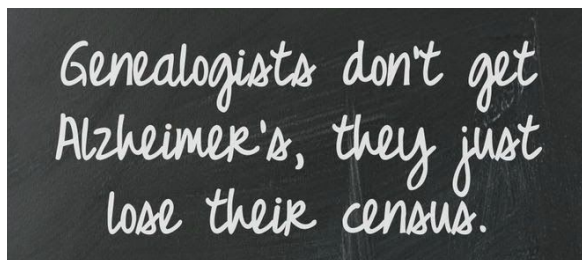
The *Kniphofia* It is a perennial native to South Africa and has been introduced into many parts of the world. The flowers produce copious nectar while blooming and are attractive to bees, butterflies, fantails, bellbirds and tui, which will visit as long as the nectar lasts. Many flower from early summer until autumn, while other kniphofia are spring or autumn flowering. Able to tolerate heat, humidity and frost, seaside and inland conditions, they are have been planted for interest, attracting birds and insects and keeping the sandy soil in place in the cemetery.

New Home for NZSG Library

Following the recent closure of Richmond School, the Canterbury Branch of New Zealand Society of Genealogists, has had to move their Library for the second time since the demise of Shirley Community Centre in the earthquakes.

They are now based at Parklands Community Lodge. As well as a venue for their meetings, the genealogical library has computers, microfiche, books including cemetery transcripts, school records, parish registers, local church and school histories, overseas family history magazines, and much more!

The Library is open to visitors on Thursdays 10am-3pm and Saturdays 2pm – 4pm at Parkview Community Lounge, 75 Queenspark Drive, Parklands.



Student Interns

Its not often that you get a chance to work with "Transcendence", "The Neon Beast" and a croissant smuggler. In "real life", three students from the University of Canterbury Community Leadership Course, assigned to us for 12 hours over 6 weeks to look for a zero cost solution to future-proofing our website. They were a delight to work with and helped us move on with managing our data with confidence. We hope they learned a lot about working with a small group of ageing volunteers. At the end of the course, the brief presentations from the entire class of 103 students were very inspiring and gave us comfort that there is an intelligent community-minded generation coming through the University who will lead us well in the future.

Thank you!

We hope to continue to give students the opportunity to work with us, particularly those with skills in interviewing and digital editing. If this is something that might interest you as a student or teacher, please contact us.



Project Update

In 2013 we found ourselves with a growing To Do List of projects. We had grabbed every opportunity we could during the Earthquake period to collect data to prove the heritage value of Linwood Cemetery and keep people aware of the damage in the cemetery. Time does seem to have taken on a different dimension and reaching the end of the following projects is still some way away.

If you have an ancestor in Linwood Cemetery that you would like recognised in one of the following projects, or would like to donate volunteer hours to us on a specific project, please let us know.

Future proofing our data

We continue to wait for improvements to the CCC Cemeteries Database to see if they will be a suitable place to store grave plot data which includes our plot photographs. At the same time we are still looking for a solution of our own that will future-proof our data and give free public access for no cost long after the Trust ceases to exist.



Suffrage

Olivia, a previous intern from the University of Canterbury is now living in Oamaru and will continue to add her research on those in the cemetery who signed the Suffrage Petition when she has time. This can be found on <http://suffragepetitionlinwoodcemetery.tumblr.com/>

From her research we know of at least 230 signatories buried in Linwood Cemetery and we are sure there will be more come to light as time goes on.

Polish Marshland Immigrants

We continue to advocate for the Polish community that created the fertile suburb of Marshland and are buried in Linwood Cemetery.

Many were passengers on the *Freidburg* which arrived in NZ in 1872. The immigrants' worked

very hard to re-claim the land from Rhodes Swamp and made it suitable for growing vegetables in. We had hoped that the new Preston's sub-division being built on that land would acknowledge this by using some of the family names for the streets but we failed to achieve this.

Their history does live on in Sharlick Street, Avondale though it is a shame that the names are no longer present in the area they transformed.

A full list of the Origin of Christchurch Place and Street Names now has a Lost Christchurch section added and can be found at <http://my.christchurchcitylibraries.com/christchurch-place-names/>

We hear regularly from Sister Martha Szymanska who is busy completing Volumes 2, 3 and 4 of her family history and Ray Watemberg of the Polish Genealogical Society of NZ both of whom are based in Taranaki.



Oral History Project

We are aiming to send out the contributions to participants for review before Easter.

Following the editing process, and final approval by the participants, we hope to make the films available to view via our website.

Richard's Tour Guide

The Tour Guide for Linwood Cemetery written by Richard Greenaway in 2006, is currently being updated to reflect new research and the changes to the fabric of Christchurch. Once completed, it will replace the one currently available on the CCC Libraries website (also accessible by a link on our website).

2015 and beyond

Following its Annual Review, the Trust has set a five-year plan. Unless younger people join the Trust Board, it is unlikely that the Trust will continue into the 2020s. These are our aims, subject to permissions and finances, for the next 5 years.

Donations to our Project Fund will help us to achieve these.

Preservation

- Weed mat, mulch & gravel where it will tidy selected grave plots
- Block 1 Retaining Wall - McGregors Rd
- "Jig Saw Puzzle Pieces"
- B34P92 KERR, B3P1&2 HULBERT, B9P5 GUTHRIE, B32P252 BEAUCHAMP

Maintenance

- Block Markers
- Removal and reporting of vandalism

Plot Records

- Complete a publicly accessible future-proofed digital record of grave plots
- Complete current research projects including oral history contributions

Education

- Continue to make people aware of the

heritage value and issues facing Linwood Cemetery and their solutions through events, talks and positive publicity.

- Facilitate the development of curriculum based programmes for schools and youth groups.

What's on in Linwood Cemetery?

ANZAC Commemoration Event

Sunday 19th April 2015, 11am



This year our commemoration of those who gave their life or youth to military service and are memorialised in Linwood Cemetery will have focus on the Gallipoli campaign.

Please join us "Lest We Forget."

Re-dedication of the Henry Thomson memorial

Mid-June 2015, Date and time to be confirmed

A re-dedication ceremony following repairs funded by the Akaroa Freemasons to the grave of Henry THOMSON and to commemorate the 125th Anniversary of the NZ Freemasons.

TV2 Kid's Fest

4th - 18h July 2015

Plans are afoot to put on a Kid's Fest Event again this year so keep your eyes open for the programme and book early as our events fill quickly.



LOST PROPERTY - Did you lose your specs in Linwood Cemetery in October during Richard's Tour? Please contact us if they are yours so we can get them back to you!



Trust Board Meetings

The Trust Board meets on the evening of the 3rd Wednesday of each month except in January. We would welcome hearing from you if you are interested in supporting us at a decision-making level.

Our next issue

Issue 10 of *Grave Concerns* is scheduled for September 2015. If you have any questions, would like to contribute suggestions or content to our newsletter, please contact us by 1st August 2015.